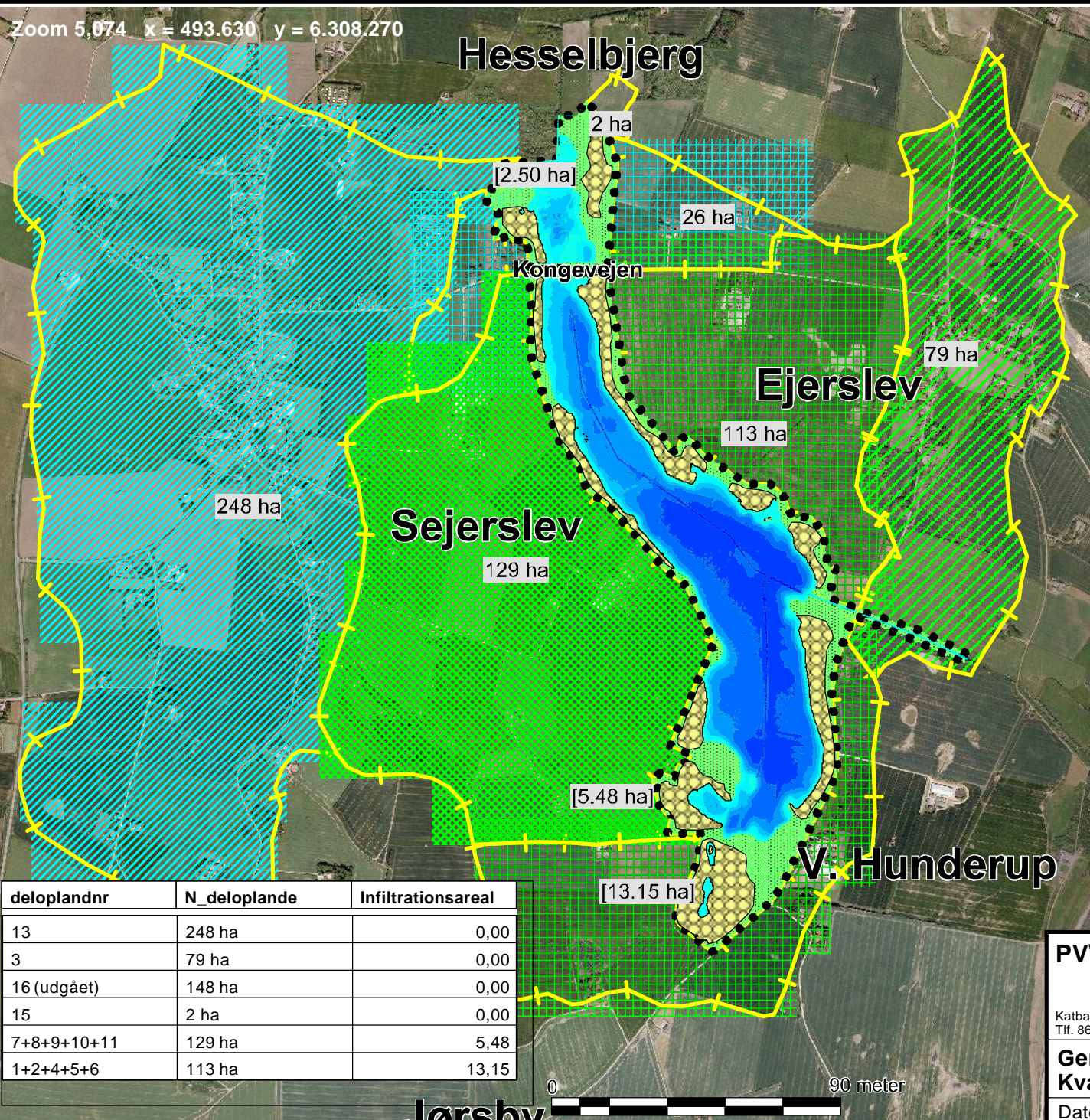
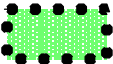


Zoom 5,074 x = 493.630 y = 6.308.270

Hesselbjerg











Signatur

 Redigeret_projektområde: 96,59 ha
 Syd for Kongevejen: 83,15 ha
 Nord for kongevejen: 13,44 ha

Infiltrationsarealer disponible for afstrømning fra det direkte opland.
 N for Kongevejen 2 arealer i alt 2,5 ha
 S for Kongevejen i Sejerslev 5 arealer i alt 5,48 ha
 S for Kongevejen i Ejerslev/ V. Hunderup 5 arealer i alt 13,15 ha

-  Delopland
-  Direkte opland N for Kongevejen (26 ha)
-  Vandløbsopland søen N for Kongevejen (248 ha)
-  Vandløbsopland søen S for Kongevejen (79 ha)
-  Direkte opland S for Kongevejen (113 ha)
-  Direkte opland S for Kongevejen (129 ha)

Signatur vanddybder

-  3.50 til 4.00 m
-  3.00 til 3.50 m
-  2.50 til 3.00 m
-  2.00 til 2.50 m
-  1.50 til 2.00 m
-  1.00 til 1.50 m
-  0.50 til 1.00 m
-  0.00 til 0.50 m

deloplandnr	N_deloplande	Infiltrationsareal
13	248 ha	0,00
3	79 ha	0,00
16 (udgået)	148 ha	0,00
15	2 ha	0,00
7+8+9+10+11	129 ha	5,48
1+2+4+5+6	113 ha	13,15

0 90 meter

Jørsbov

PV\ Natur & Miljø Rådgivning

Katballevej 14, 8800 Viborg
 Tlf. 86667297 Fax. 86667297



**Genetablering af Hund sø
 Kvælstof-tilførsel/-omsætning**

J.Nr. 2188
 Målforhold: 1:1.800 A4
 Bilag 11.4 Kortbilag 1

Dato: 17.10.2011